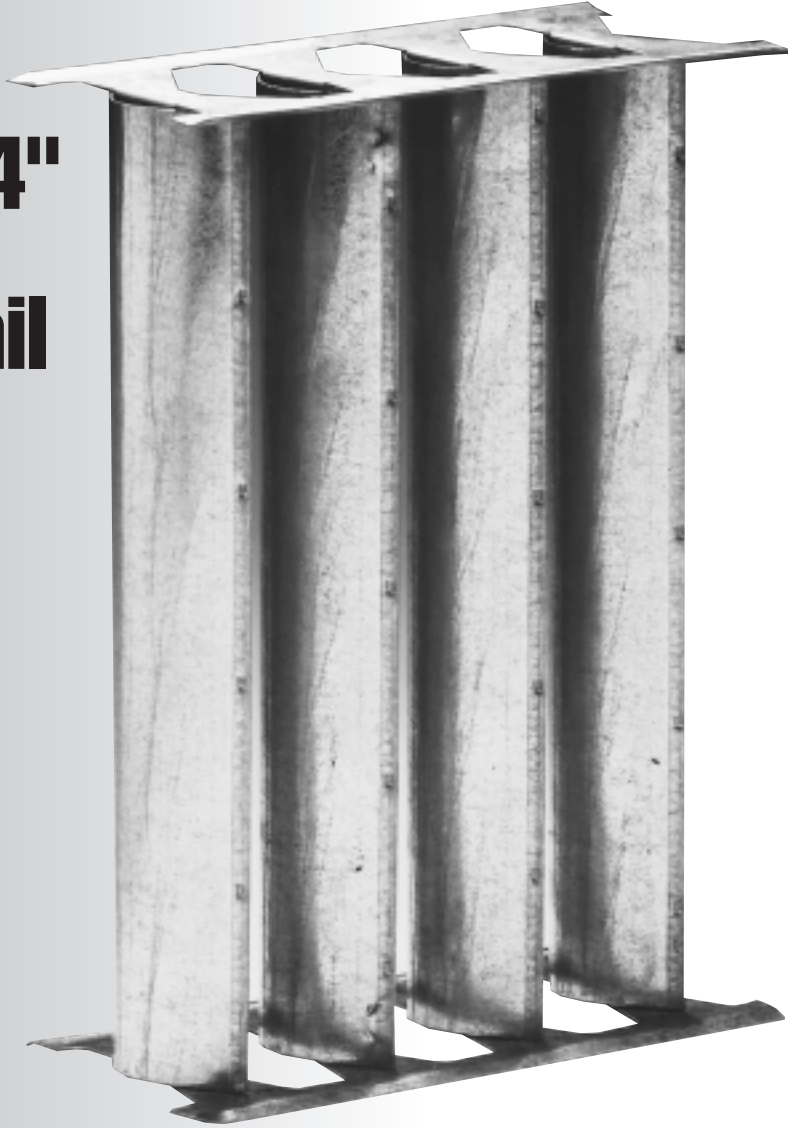


# PROrail™



## 2" and 4" Turning Vane Rail



TURNING VANE

**PROrail: Every decision should be this successful. . .and this easy!**

- Available for 2" and 4" Turning Vanes
- Available in specialty metals
- Insures precise vane alignment
- Assembly is quick and easy
- Fabricated with precision equipment
- Consistent product quality



**DUCTMATE®**

**Industries, Inc.**

# PROrail™

## 2" and 4" Turning Vane Rail

### DESCRIPTION

2" and 4" Turning Vane Rail

### BASIC USE

Provides a self-aligning, easy means of securing turning vanes for the purpose of directing air around mitered elbows.

### SPECIAL CHARACTERISTICS

Precision stamped from hot-dipped galvanized steel

Available from stock through a nationwide distributor network

Pressure tested to 15" w.g. with no separation

Trained Ductmate personnel are available to assist with additional technical questions

Exclusive patented features ensure that the rail will remain intact, and your airflow efficient, even under pressure

### PRODUCT GUARANTEE

PROrail is guaranteed against defective material.

### PACKAGING INFORMATION

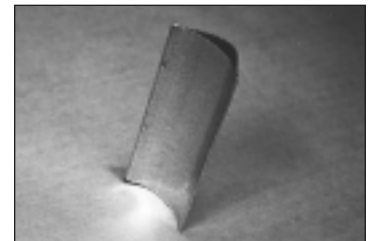
Part#	Size	Gauge	Ft. per carton
2PRGA22	2"	22	100
2PRGA24	2"	24	100
4PRGA22	4"	22	100
4PRGA24	4"	24	100

### INSTALLATION INSTRUCTIONS

1. Cut PROrail to length.



2. Cut the vanes to length.



3. Set the vanes onto the bottom rail.



4. Insert the top rail tabs into the vanes.



Assembly is ready to be inserted into the duct.  
Fasten to duct wall per the SMACNA recommendations.



#### CHARLEROI, PA

210 Fifth Street  
Charleroi, PA 15022  
800-245-3188  
724-258-0500  
FAX: 724-258-5494

#### LODI, CA

810 S. Cluff Avenue  
Lodi, CA 95240-3141  
800-344-3270  
209-333-4680  
FAX: 209-333-4678

[www.ductmate.com](http://www.ductmate.com)



Distributed By: